



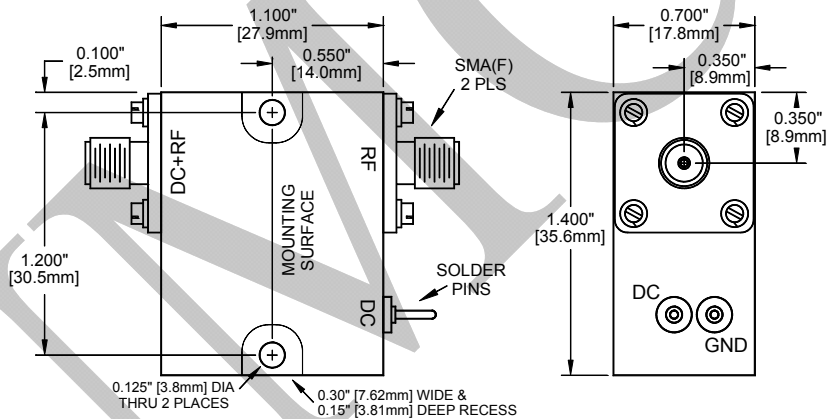
**Model: BT-2410-S { & BT-2410-SB }**

Description:	Bias Tee
Operating Frequency:	10 KHz – 2.4 GHz
Insertion Loss:	1.0 dB Max ; [1.2 dB over 10-20 KHz]
Isolation DC to RF:	40dB Min ; [35dB over 10-30 KHz]
VSWR:	1.35:1 Max ; [1.8:1 over 10-30 KHz]
Bias Voltage:	100 Volts Max
Bias Current:	400mA Max
Bias Frequency Bandwidth (3dB Corner Freq.)	DC-300Hz
RF Power Handling:	20W CW/AVG
Bias DC Resistance:	4.0 Ohm Max
RF Connector:	SMA (F)
RF+DC Connector:	SMA (F)
Bias Connector:	Standard Solder-Pin
<b>{Add suffix "B" for Bias Connector with BNC(F) &lt;&gt; Model: BT-2410-SB }</b>	
Impedance:	50 Ohms Nominal
Quality:	Best-Commercial-Grade

**Environmental Ratings:**

Temperature:	{Operating: -55°C to +95°C} & {Storage: -60°C to +110°C}
Humidity:	MIL-STD-202F, Method 103B, Cond. B (96 hours at 95% R.H.)
Shock:	MIL-STD-202F, Method 213B, Cond. B (75G, 6mSec)
Vibration:	MIL-STD-202F, Method 204D, Cond. B (.06" double amplitude, or 15G)
Altitude:	MIL-STD-202F, Method 105C, Cond. B (50,000 Feet)
Temp. Shock:	MIL-STD-202F, Method 107D, Cond. A (5 cycles)

**Model: BT-2410-S ; { DC-Port with Solder Pin }**



**Model: BT-2410-SB ; { Option "B"; DC-Port with BNC(f) }**

