



Model: SW-K01W-5S

Description: SP5T, Absorptive, PIN-Switch
Operating Frequency: 1 – 15 GHz
Insertion Loss: 2.7 dB Max
Isolation:

1 – 6 GHz	6 – 12.4 GHz	12.4 – 15 GHz
75 dB Min	65 dB Min	60 dB Min

VSWR (RF Path “ON” or “OFF”): 1.7:1 Max
Rise/Fall time (10% to 90% RF, 90% to 10% RF): 250 ns Max
On/Off time (50% TTL to 90% RF, 50%TTL to 10% RF): 300 ns Max
Phase Balance (Deviation from Median): $\pm 3^\circ$ max
Operating Power: CW & AVG +27dBm Max *
..... * (+24dBm Max into “JX” Port @ Off-State)
..... Peak: 5W @ 1 μ S PW & 10% Duty-Cycle Max
Control Input Characteristics: Std. TTL / Unit-Load / Floating-High
Control Logic: 5-Controls, Logic “0” = RF Path “ON”
Power Supplies: +5(± 0.25)V @ 140mA Max
..... -12(± 0.5)V @ 70mA Max
Connectors (RF): SMA (f), Removable
Connectors (Supplies/Controls) Solder Pins
Impedance: 50 Ohms Nominal
Quality: Best-Commercial-Grade

Environmental Ratings:

Temperature: {Operating: -55°C to +95°C} & {Storage: -60°C to +110°C}
Humidity: MIL-STD-202F, Method 103B, Cond. B (96 hours at 95% R.H.)
Shock: MIL-STD-202F, Method 213B, Cond. B (75G, 6mSec)
Vibration: MIL-STD-202F, Method 204D, Cond. B (.06” double amplitude, or 15G)
Altitude: MIL-STD-202F, Method 105C, Cond. B (50,000 Feet)
Temp. Shock: MIL-STD-202F, Method 107D, Cond. A (5 cycles)

Available Options:

(Units with listed options here may be subject to some specification tradeoffs from the standard, consult factory)

■ Supply Voltages

- A1 [+5(± 0.25)V / -5(± 0.25)V] *
- A2 [+5(± 0.25)V / -15(± 0.5)V]
- A3 [+12(± 0.5)V / -12(± 0.5)V]
- A4 [+15(± 0.5)V / -15(± 0.5)V]

■ RF Connectors

- B1 [J1 – J5 Ports with SMA(M)]
- B2 [All SMA (M)]
- B3 [COM Port with SMA(M)]

■ Control Function

- F1 [Inverse Logic, (“1” = Path “ON”)]
- F2 [3-Bit Binary Controls + Enable] ; see below for “Outline Drawing” and “Function Table”

■ Video Suppression Filter

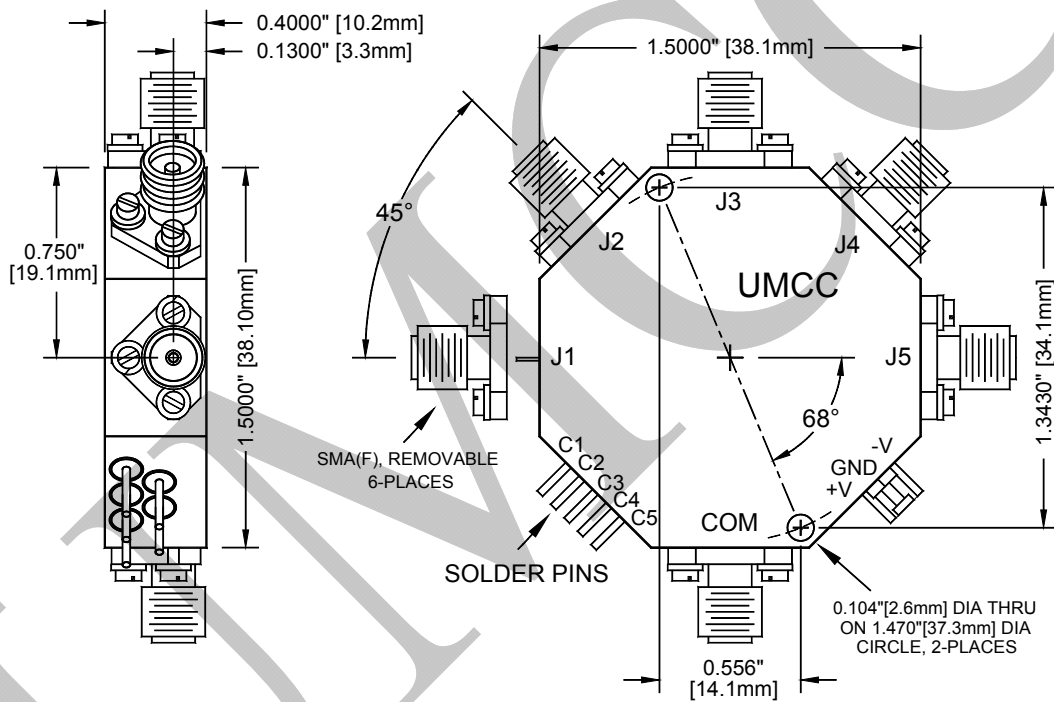
- G1 [VF @ COM Port <> 0.25 dB additional Loss]
- G2 [VF @ J1 – J5 Ports <> 0.25 dB additional Loss]
- G3 [VF @ All Ports <> 0.5 dB additional Loss]

* Recommended for Low Power Consumption <> Additional Switching Delay (ON/OFF time)



Model: SW-K01W-5S

Outline

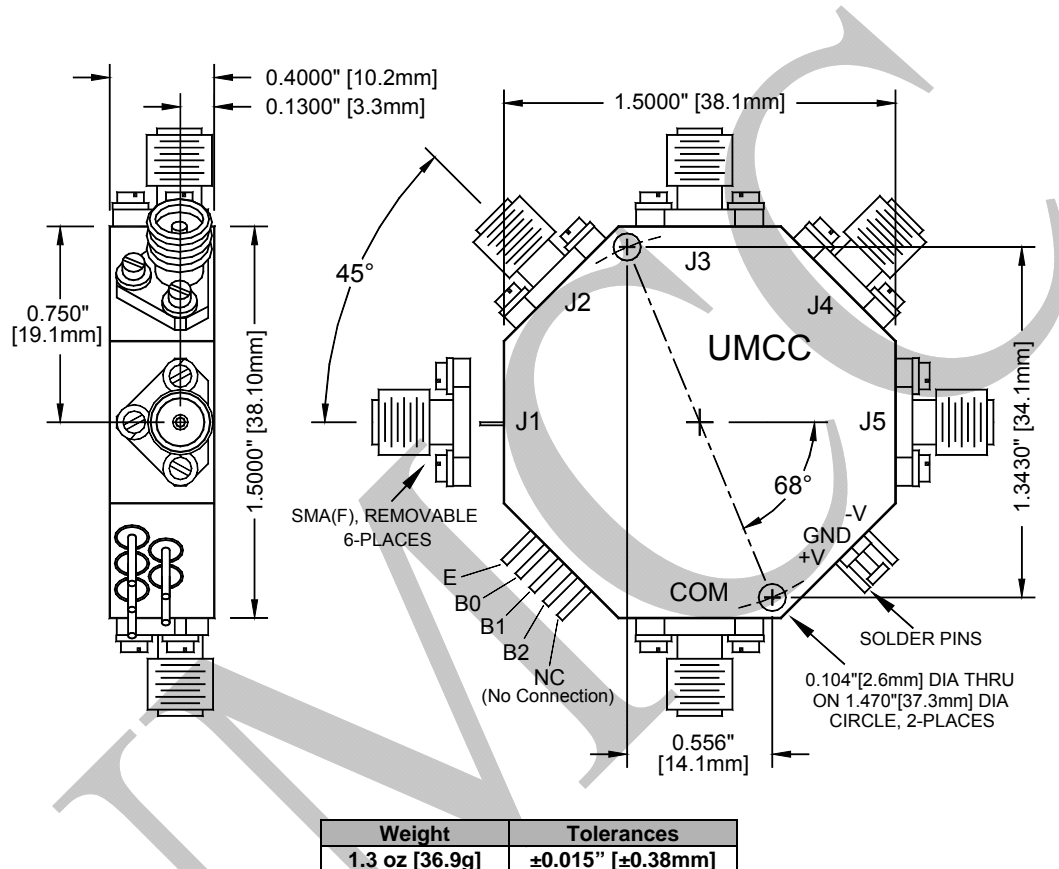


Weight	Tolerances
1.3 oz [36.9g]	±0.015" [±0.38mm]



Model: SW-K01W-5S

Outline Drawing (SP5T Radial with Option "F2")



Function Table for Option "F2" (3-Bit Binary Control + Enable)

INPUTS				RF PATH				
E	B2	B1	B0	J1	J2	J3	J4	J5
1	0	0	0	ON	OFF	OFF	OFF	OFF
1	0	0	1	OFF	ON	OFF	OFF	OFF
1	0	1	0	OFF	OFF	ON	OFF	OFF
1	0	1	1	OFF	OFF	OFF	ON	OFF
1	1	0	0	OFF	OFF	OFF	OFF	ON
0	X	X	X	OFF	OFF	OFF	OFF	OFF